



The Relocatable House Co.

Relocating houses, creating new homes.



Creating quality healthy homes, fast.

 60m²

 1 bathroom

 2 Bedroom

 Compact living

 From \$150,000 inc GST

Includes completion of specified inclusions.

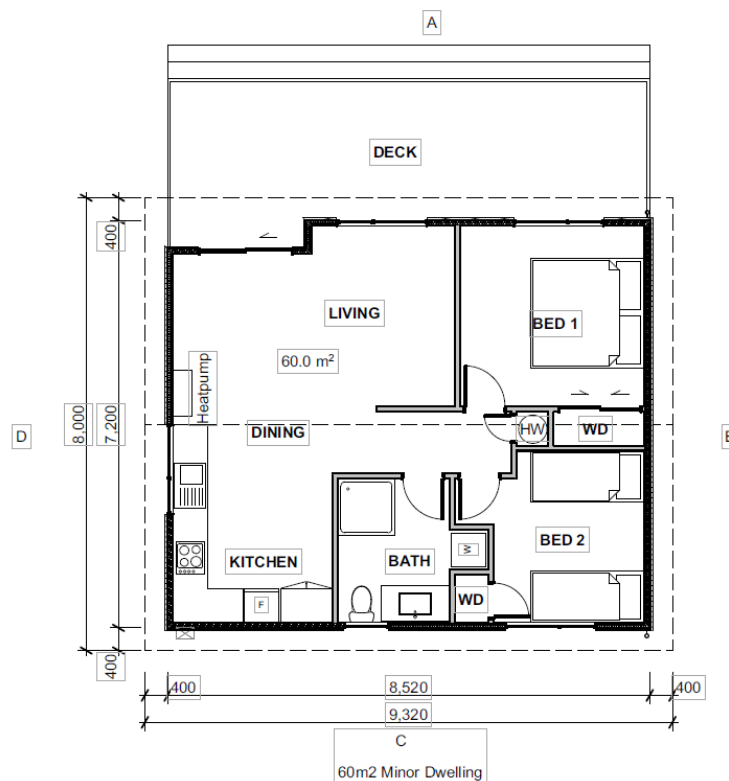
Deck and chairs depicted are excluded.

Moving costs and connection to services are excluded.

This modern minor dwelling features quality brands and materials for a healthy home.

Features:

- Coloursteel Endura gable roofing .55mm
- Horizontal timber weatherboards H3.1 over timber cavity
- Built for very high wind zone
- Double glazed windows, fully insulated, with a Mitsubishi Heatpump. Compliant to Healthy Homes insulation and heating standards.
- Electric Solar Ready hot water cylinder 180L
- Energy-saving recessed LED downlights
- Fully painted exterior
- European tap-wear for kitchen and bathroom



0508 4 RELOCATE (0508 473 562)
INFO@RELOCATABLEHOUSES.CO.NZ

