

 ITEMS FOR REMOVAL / DEMOLITION

FLOOR AREA (APPROX)	63.2m <sup>2</sup>
<b>BRANZ Maps information</b>	
Wind Zone:	Low
Earthquake Zone:	1
Corrosion Zone:	C

**DISCLAIMER**

The Relocatable Home Company ('TRHCo') does not warrant or take responsibility for the accuracy of the measurements, descriptions, specifications or any other information issued. TRHCo accepts no liability or responsibility for any loss or damage suffered by the recipient of this information arising out of, or in connection with, the use or misuse of this information. This information is general and strictly indicative and has not been prepared for the use by any specific recipient and may not fully reflect their needs. Do not scale off drawings. The recipient is responsible for their own due diligence and for verifying the correctness and completeness of any information issued.

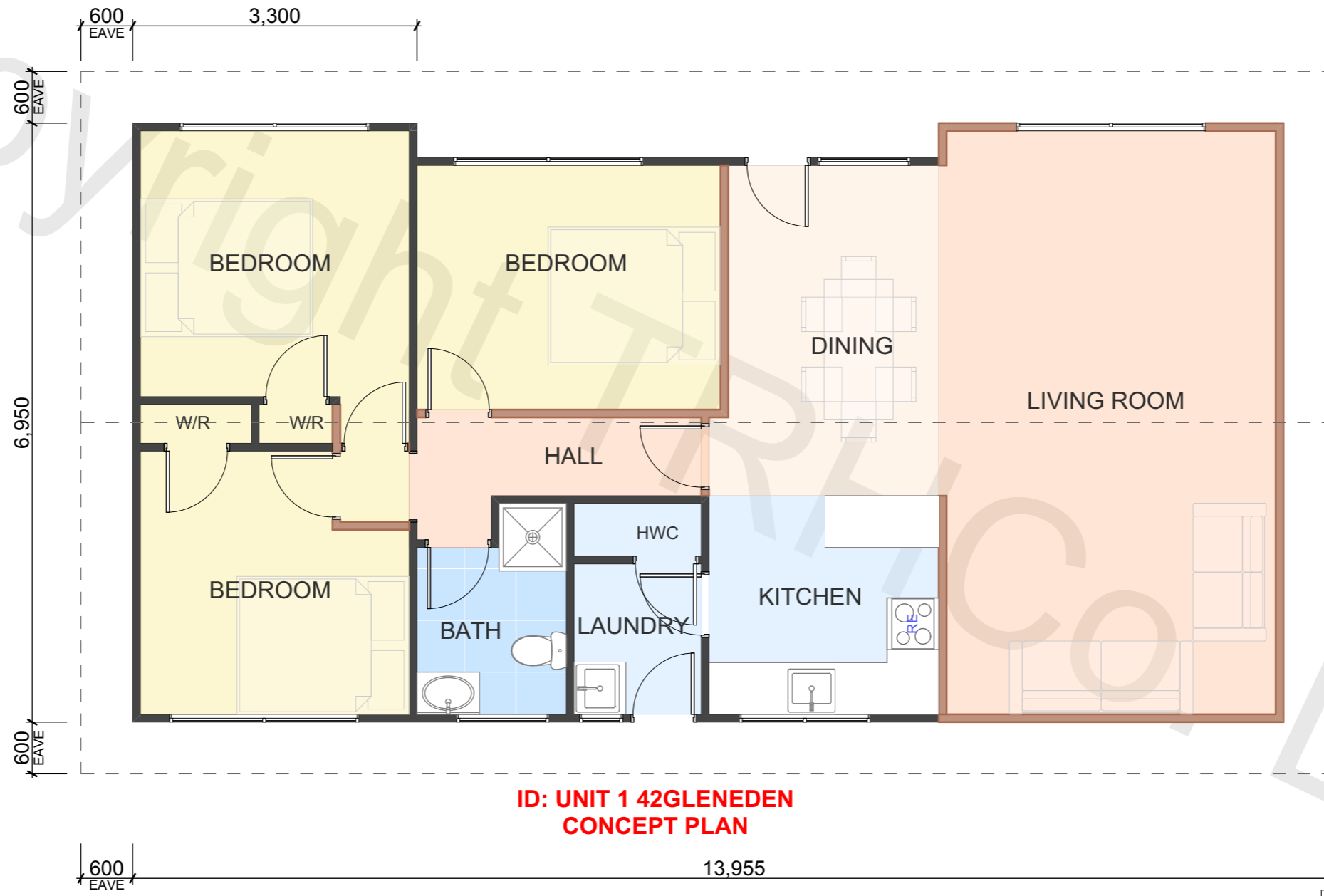
© COPYRIGHT of The Relocatable Home Co. Ltd



**P:** 0508 4 RELOCATE (473 562)

**E:** info@trhco.co.nz

**W:** www.trhco.co.nz



**ID: UNIT 1 42 GLENEDEN  
CONCEPT PLAN**

PROPOSED NEW WALLS

FLOOR AREA (APPROX)	90.4m <sup>2</sup>
<b>BRANZ Maps information</b>	
Wind Zone:	Low
Earthquake Zone:	1
Corrosion Zone:	C

**DISCLAIMER**

The Relocatable Home Company ('TRHCo') does not warrant or take responsibility for the accuracy of the measurements, descriptions, specifications or any other information issued. TRHCo accepts no liability or responsibility for any loss or damage suffered by the recipient of this information arising out of, or in connection with, the use or misuse of this information. This information is general and strictly indicative and has not been prepared for the use by any specific recipient and may not fully reflect their needs. Do not scale off drawings. The recipient is responsible for their own due diligence and for verifying the correctness and completeness of any information issued.

© COPYRIGHT of The Relocatable Home Co. Ltd



**P:** 0508 4 RELOCATE (473 562)  
**E:** info@trhco.co.nz  
**W:** www.trhco.co.nz

# Design & council consents

Here is a selection of some of the things we can do to help you add value to your property:

- Site Preparation Services
- Design & Draughting Services
- Additions & Alterations
- Building Consents
- Resource Consents
- On-site Shifts

**Do you have land and are wondering where to start?  
Book a FREE 20 minute consultation\*.  
Give our team a call to book.**

\*T&Cs apply.

**0508 4 RELOCATE (0508 473 562) | [trhco.co.nz](http://trhco.co.nz)**

Disclaimer: This information is of a general nature only and must not be taken as specific, current, or complete advice. Readers should make their own, independent inquiries before acting on any information herein. No responsibility is taken for any loss, damage or injury arising from the information in this guide. No representation is made that the information is accurate or suitable for all consumers. Readers who rely on this information do so at their own risk. Copyright© 2021 BRC Property Trust, all rights reserved. No reproduction or distribution without prior written permission. ™ Trademark of BRC Trustee Ltd.